



Pro Audio  
Germany

# MAXFLEX

[www.4-acoustic.com](http://www.4-acoustic.com)



# MAXFLEX

One of the most scalable and flexible  
Soundsystem in the market.

- PCS-110L Single 10" line array module
- PCS-118LB Single 18" line array subwoofer
- PCS-218NB Double 18" ground stack subwoofer
- PCS-318NB Triple 18" ground stack subwoofer



GERMAN  
Pro  
Audio  
Engineering

[www.4-acoustic.com](http://www.4-acoustic.com)



# Contents

Contents.....	<b>03</b>
PCS-110L Line Array Module .....	<b>04</b>
PCS-110FFR Flight Frame .....	<b>05</b>
PCS-110FFR-L Flight Frame Light .....	<b>05</b>
PCS-118LB Single 18" Line Array Subwoofer .....	<b>06</b>
PCS-218NB Double 18" Ground Stack Subwoofer .....	<b>07</b>
PCS-318NB Triple 18" Ground Stack Subwoofer .....	<b>08</b>
PCS-118LB + PCS-110L Ground Stack System .....	<b>09</b>
PCS-118LB + PCS-110L Fly Set System.....	<b>10</b>
PCS-110L Fly Set + PCS-118LB Ground Stack System .....	<b>11</b>
PCS-118LB + PCS-110L M20 Tube Setup System .....	<b>12</b>
PCS-218NB Ground Stack System .....	<b>13</b>
PCS318NB Ground Stack System .....	<b>13</b>
Cases .....	<b>14</b>
Overview .....	<b>15</b>

# PCS-110L

www.4-acoustic.com

- Highest quality Baltic multiplex wood
- Water-resistant Polyurea coating
- Suitable for touring, rental and installation
- 900 W program power
- 450 W AES power
- Vertical adjustment from 0° to 10° with a resolution of 1,0° per step
- Mechanical brake for easy installation and setup
- 16 Ohm Impedance
- Coverage pattern is 10°x120°

PCS-110L is a compact size, high power speaker to use in vertical line array columns up to 12 units per flight frame. The mechanical design offers a vertical adjustment from 0° to 10° with a resolution of 1,0° per step. For an easy setup of the vertical angel PCS-110L is equipped with a simple but clever mechanical brake. The entire fly ware is made of high quality, extreme resilient aluminum components. This two way passive system is comprised of one 10" Neodymium woofer and two right mounted 1" drivers connected to an accurate calculated wave guide. The maximum SPL of a single unit is 133 dB. The coverage pattern is 10°x120° (v x h). The shock-proof and wheather-resistant housing is made of best quality Baltic multiplex wood and covered with a strong, black water-resistant Polyurea coating. Four integrated handles will support an easy transport and installation. The front side of the speaker is protected by a 1,5 mm strong, black metal grill covered with black color acoustic foam. The construction of the two different available flight frames allows multi-functional hanging and standing installation.



## Speci- fication

### PCS-110L

Model Name	PCS-110L
GS1 (EAN) CODE	4260318510592
System Type	1x10"/2x1" Line Array Module
Power Rating	450 W AES 900 W program 1800 W peak
Frequency Range (+/- 3 dB)	75 Hz - 20 kHz
Coverage Pattern (hvx)	120°x10°
Sensitivity	103 dB 1w/1m
Maximum SPL	133 dB
Woofer	1 x STG-10L 350W AES, 3" voice coil, neodymium
Driver	2 x STG-45NB 50W AES, 1,75" voice coil, neodymium
Nominal Impedance	16 Ohm
Input Connectors	2 x Neutrik NL4 Socket parallel 1+/1-
Housing	Baltic Birch Multiplex
Coating	Water-resistant Polyurea coating
Dimensions (h/w/d)	319x500x515 mm
Net weight	21,5 Kg





Pro Audio  
Germany

## PCS-110FFR

www.4-acoustic.com

- Scalable up to 24 units PCS-110L per flight frame
- Suitable for PCS-110L and PCS-118LB
- 4 mm strong galvanized Steel
- Shockproof black powder coating
- Support multi pick point fixing



Pro Audio  
Germany

## PCS-110FFR-L

www.4-acoustic.com

- Multi function flight frame design
- Suitable for PCS-110L hanging up to 6 pcs
- Ground stack support frame for PCS-218NB and PCS-318NB
- Shockproof black powder coating
- Support multi pick point fixing
- Snap In fixing as ground stack
- 4 mm strong galvanized Steel



Accessories

### PCS-110L

Order Code	GS1 (EAN) Code	Description
PCS-110FFR	4260318510608	Flight Frame for PCS-110L or PCS-118LB
PCS-110FFR-L	4260318510615	Flight Frame Light for PCS-110L
PCS-110L-FC	4260318511230	Flight Case with wheels for 4 pcs. PCS-110L modules
KA-SP2-0.5	4260318510929	0,5 Meter speaker cable 2x2,5qmm
KA-SP2-10	4260318510974	10 Meter speaker cable 2x2,5qmm
KA-SP2-15	4260318510981	15 Meter speaker cable 2x2,5qmm
KA-SP2-20	4260318510998	20 Meter speaker cable 2x2,5qmm



GERMAN  
Pro  
Audio  
Engineering

# PCS-118LB

www.4-acoustic.com



## Accessories

### PCS-118LB

- Multi function scalable 18" line array subwoofer
- Suitable for PCS-110FFR flight frame
- 3000 W program power
- 1500 W AES power
- Low-distortion neodymium woofer with die-casting basket
- 4" voice coil
- Designed for touring, rental and installation
- 8 Ohm Impedance
- Upside and downside connecting panel with Neutrik NL4 sockets
- Innovative fly ware design for hanging or stacking installations

## Specification

### PCS-118LB

Model Name	PCS-118LB
GS1 (EAN) CODE	4260318510622
System Type	Single 18" line array subwoofer
Power Rating	1500 W AES 3000 W program 6000 W peak
Frequency Range (- 10 dB)	30 Hz - 200 Hz
Sensitivity	98 dB 1w/1m
Maximum SPL	132 dB
Woofer	1 x STG-18NB 1500W AES, 4" voice coil
Suspension/Mounting	Line array fly ware for PCS-110FFR Top mounted M20 threaded top hat to suit M20 tapped poles
Nominal Impedance	8 Ohm
Input Connectors	Upside and downside connection panel 4 x Neutrik NL4 Socket parallel 2+/2-
Dimensions (h/w/d)	600x500x600 mm
Net weight	44,0 kg

Order Code	GS1 (EAN) Code	Description
STG-WH100	4260318511131	4 x 100mm STAGETONE blue wheels (two pcs. with brake)
PCS-118LB-FC	4260318511247	Flight Case with wheels for PCS-118LB
PCS-118LB-TR	4260318510639	Trolley for PCS-118LB Subwoofer
PCS-118LB-RC	4260318511650	Rain and transport cover for PCS-118LB
STG-M20T	4260318511049	Adjustable M20 threaded distance tube 1,0 meter to 1,5 meter
KA-SP4-0.5	4260318511155	0,5 Meter speaker cable 4x2,5qmm
KA-SP4-05	4260318511193	5 Meter speaker cable 4x2,5qmm
KA-SP4-10	4260318511209	10 Meter speaker cable 4x2,5qmm
KA-SP4-15	4260318511216	15 Meter speaker cable 4x2,5qmm
KA-SP4-20	4260318511223	20 Meter speaker cable 4x2,5qmm





Pro Audio  
Germany

# PCS-218NB

www.4-acoustic.com

- Double 18" ground stack subwoofer
- Snap In function for PCS-110FFR-L
- 6000 W program power
- 3000 W AES power
- Premium carbon fiber neodymium woofer
- 4" voice coil
- Designed for touring, rental and installation
- 4 Ohm Impedance
- Connecting panel with Neutrik NL4 sockets
- 2 x M20 threaded top hat to suit M20 tapped toles



## Specification

### PCS-218NB

Model Name	PCS-218NB
GS1 (EAN) CODE	4260318511117
System Type	Double 18" ground stack subwoofer
Power Rating	3000 W AES 6000 W program 12000 W peak
Frequency Range (- 10 dB)	30 Hz - 200 Hz
Sensitivity	101 dB 1w/1m
Maximum SPL	138 dB
Woofer	2 x STG-18NB-S 1500W AES, 4" voice coil
Suspension/Mounting	Snap In function for PCS-110FFR-L 2 x M20 threaded top hat to suit M20 tapped poles
Nominal Impedance	4 Ohm
Input Connectors	2 x Neutrik NL4 Socket parallel 1+/1-
Dimensions (h/w/d)	1000x500x700 mm
Net weight	73,5 kg

## Accessories

### PCS-218NB

Order Code	GS1 (EAN) Code	Description
STG-WH100	4260318511131	4 x 100mm STAGETONE blue wheels (two pcs. with brake)
PCS-218NB-RC	4260318511254	Rain and transport cover for PCS-218NB
STG-M20T	4260318511049	Adjustable M20 threaded distance Tube 1,0 meter to 1,5 meter
KA-SP4-0.5	4260318511155	0,5 Meter speaker cable 4x2,5qmm
KA-SP4-05	4260318511193	5 Meter speaker cable 4x2,5qmm
KA-SP4-10	4260318511209	10 Meter speaker cable 4x2,5qmm
KA-SP4-15	4260318511216	15 Meter speaker cable 4x2,5qmm
KA-SP4-20	4260318511223	20 Meter speaker cable 4x2,5qmm



# PCS-318NB

www.4-acoustic.com

- Amazing 9000 W program power
- 4500 W AES power
- Triple 18" ground stack subwoofer
- Snap In function for PCS-110FFR-L and PCS-210FFR-L frames
- Low-distortion neodymium woofer with die-casting basket
- 4" voice coil
- Designed for touring, rental and installation
- 2,7 Ohm Impedance
- Connecting panel with Neutrik NL4 sockets

Three premium 4" voice coil neodymium chassis, each with 1500 watts AES power, installed in a just 500x1200x700 mm large case, provide a sound pressure up to 154dB. A peak power performance of over 18,000 watts is possible. The frequency response covers 28 Hz to 160 Hz and provides a flexible connecting point to the mid / high systems. The nominal impedance is 2.7 ohm.



## Specification

### PCS-318NB

Model Name	PCS-318NB
GS1 (EAN) CODE	4260318510486
System Type	Triple 18" ground stack subwoofer
Power Rating	4500 W AES 9000 W program 18000 W peak
Frequency Range (- 10 dB)	28 Hz - 160 Hz
Sensitivity	103 dB 1w/1m
Maximum SPL	154 dB
Woofer	3 x STG-18NB 1500W AES, 4" voice coil
Suspension/Mounting	Snap In function for PCS-110FFR-L 2 x M20 threaded top hat
Nominal Impedance	2,7 Ohm
Input Connectors	2 x Neutrik NL4 Socket parallel 1+/1-
Dimensions (h/w/d)	1200x500x700 mm
Net weight	91,5 kg

## Accessories

### PCS-318NB

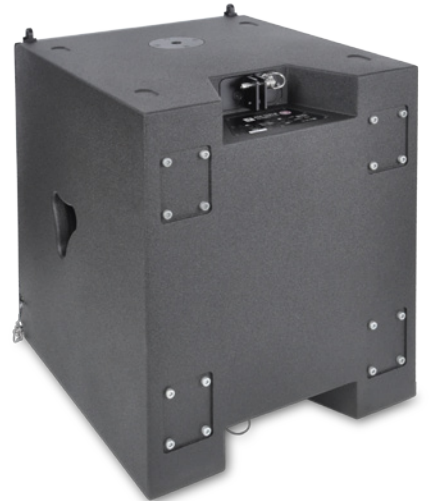
Order Code	GS1 (EAN) Code	Description
STG-WH100	4260318511131	4 x 100mm STAGETONE blue wheels (two pcs. with brake)
PCS-318NB-RC	4260318511261	Rain and transport cover for PCS-318NB
KA-SP4-0.5	4260318511155	0,5 Meter speaker cable 4x2,5qmm
KA-SP4-05	4260318511193	5 Meter speaker cable 4x2,5qmm
KA-SP4-10	4260318511209	10 Meter speaker cable 4x2,5qmm
KA-SP4-15	4260318511216	15 Meter speaker cable 4x2,5qmm
KA-SP4-20	4260318511223	20 Meter speaker cable 4x2,5qmm





## PCS-118LB Ground Stack

QTY	Order Code	Description
4	PCS-118LB	Single 18" line array subwoofer
8	PCS-110L	1x10"/2x1" Line Array Module
2	CNCT-LB-01	Connecting part for Line Array to Subwoofer
8	KA-SP2-0.5	0,5 Meter speaker cable 2x2,5qmm
2	KA-SP4-0.5	0,5 Meter speaker cable 4x2,5qmm
2	KA-SP4-15	15 Meter speaker cable 4x2,5qmm
1	DSM-428	DSP System Controller 4 IN / 8 OUT / AES IN
1	ST-6400	Class D System Amplifier 4 x 1500 Watt @ 8 ohm



## PCS-118LB Fly Set

QTY	Order Code	Description
2	PCS-118LB	18" line array subwoofer
8	PCS-110L	1x10"/2x1" Line Array Module
2	PCS-110FFR	Flight frame for PCS-110L and PCS-118LB
8	KA-SP2-0.5	0,5 Meter speaker cable 2x2,5qmm
2	KA-SP4-20	20 Meter speaker cable 4x2,5qmm
1	DSM-428	DSP System Controller 4 IN / 8 OUT / AES IN
1	ST-6400	Class D System Amplifier 4 x 1500 Watt @ 8 ohm



## PCS-110L Fly Set + PCS-118LB Ground Stack

QTY	Order Code	Description
4	PCS-118LB	18" line array subwoofer
8	PCS-110L	1x10"/2x1" Line Array Module (picture shows 3 pcs. only)
2	PCS-110FFR-L	Flight frame light for PCS-110L (without truss coupler)
4	KA-SP2-0.5	0,5 Meter speaker cable 2x2,5qmm
2	KA-SP2-20	20 Meter speaker cable 2x2,5qmm
2	KA-SP4-0.5	0,5 Meter speaker cable 4x2,5qmm
2	KA-SP4-15	15 Meter speaker cable 4x2,5qmm
1	DSM-428	DSP System Controller 4 IN / 8 OUT / AES IN
1	ST-6400	Class D System Amplifier 4 x 1500 Watt @ 8 ohm



## PCS-118LB M20 Tube Setup

QTY	Order Code	Description
2	PCS-118LB	18" line array subwoofer
4	PCS-110L	1x10"/2x1" Line Array Module
2	PCS-110FFR-L	Flight frame light for PCS-110L
2	STG-M20TA	Adjustable M20 threaded distance tube with adaptor
2	KA-SP2-0.5	0,5 Meter speaker cable 2x2,5qmm
2	KA-SP2-02	2,0 Meter speaker cable 2x2,5qmm
2	KA-SP4-15	15,0 Meter speaker cable 4x2,5qmm
1	DSM-428	DSP System Controller 4 IN / 8 OUT / AES IN
1	ST-6400	Class D System Amplifier 4 x 1500 Watt @ 8 ohm





## PCS-218NB Ground Stack

QTY	Order Code	Description
2	PCS-218NB	Double 18" line array subwoofer
8	PCS-110L	1x10"/2x1" Line Array Module
2	PCS-110FFR-L	Flight frame light for PCS-110L
6	KA-SP2-0.5	0,5 Meter speaker cable 2x2,5qmm
2	KA-SP2-01	1,0 Meter speaker cable 2x2,5qmm
2	KA-SP4-15	15,0 Meter speaker cable 4x2,5qmm
1	DSM-428	DSP System Controller 4 IN / 8 OUT / AES IN
1	ST-6400	Class D System Amplifier 4 x 1500 Watt @ 8 ohm



## PCS-318NB Ground Stack

QTY	Order Code	Description
2	PCS-318NB	Triple 18" line array subwoofer
8	PCS-110L	1x10"/2x1" Line Array Module
2	PCS-110FFR-L	Flight frame light for PCS-110L
6	KA-SP2-0.5	0,5 Meter speaker cable 2x2,5qmm
2	KA-SP2-01	1,0 Meter speaker cable 2x2,5qmm
2	KA-SP4-15	15,0 Meter speaker cable 4x2,5qmm
1	DSM-428	DSP System Controller 4 IN / 8 OUT / AES IN
1	ST-6400	Class D System Amplifier 4 x 1500 Watt @ 8 ohm



# Cases

[www.4-acoustic.com](http://www.4-acoustic.com)



## Overview

www.4-acoustic.com

## Subwoofer

Model Name	PCS-118LB	PCS-218NB	PCS-318NB
GS1 (EAN) CODE	4260318510622	4260318511117	4260318510486
System Type	Single 18" line array subwoofer	Double 18" ground stack subwoofer	Triple 18" ground stack subwoofer
Power Rating	1500 W AES 3000 W program 6000 W peak	3000 W AES 6000 W program 12000 W peak	4500 W AES 9000 W program 18000 W peak
Frequency Range	30 Hz - 250 Hz	30 Hz - 200 Hz	28 Hz - 160 Hz
Sensitivity	98 dB 1w/1m (- 10 dB)	101 dB 1w/1m (- 10 dB)	103 dB 1w/1m (- 10 dB)
Maximum SPL	132 dB	138 dB	154 dB
Woofers	1 x STG-18NB 1500W AES, 5" voice coil	2 x STG-18NB 1500W AES, 5" voice coil	3 x STG-18NB 1500W AES, 5" voice coil
Suspension Mounting	Line array fly ware for PCS-110FFR Top mounted M20 threaded top hat	Snap In function for PCS-110FFR-L 2 x M20 threaded top hat	Snap In function for PCS-110FFR-L and PCS-210FFR-L frames
Nominal Impedance	8 Ohm	4 Ohm	2,7 Ohm
Input Connectors	Upside and downside connection panel 4 x Neutrik NL4 Socket parallel 2+/2-	2 x Neutrik NL4 Socket parallel 1+/1-	2 x Neutrik NL4 Socket parallel 1+/1-
Housing	Baltic Birch Multiplex	Baltic Birch Multiplex	Baltic Birch Multiplex
Coating	Water-resistant Polyurea coating	Water-resistant Polyurea coating	Water-resistant Polyurea coating
Dimensions (h/w/d)	600x500x600 mm	1000x500x700 mm	1200x500x700 mm
Net weight	44,0 kg	73,5 kg	91,5 kg

## PCS-110L Line Array Module

Model Name	PCS-110L
GS1 (EAN) CODE	4260318510592
System Type	1x10"/2x1" Line Array Module
Power Rating	450 W AES 900 W program 1800 W peak
Frequency Range (+/- 3 dB)	75 Hz - 20 kHz
Coverage Pattern (h xv)	120°x10°
Sensitivity	103 dB 1w/1m
Maximum SPL	133 dB
Woofers	1 x STG-10L 350W AES, 3" voice coil, neodymium
Drivers	2 x STG-45NB 50W AES, 1,75" voice coil, neodymium
Nominal Impedance	16 Ohm
Input Connectors	2 x Neutrik NL4 Socket parallel 1+/1-
Housing	Baltic Birch Multiplex
Coating	Water-resistant Polyurea coating
Dimensions (h/w/d)	319x500x515 mm
Net weight	21,5 Kg



**Pro Audio**  
Germany

# MAXFLEX

[www.4-acoustic.com](http://www.4-acoustic.com)

# MAXFLEX



**Pro Audio**  
Germany

**INLINE Marketing GmbH**

Bunsenstrasse 32

59229 Ahlen, Germany

Tel. +49 2382 7087-0

Fax +49 2382 7087-25

E-Mail [sales@4-acoustic.com](mailto:sales@4-acoustic.com)

Web [www.4-acoustic.com](http://www.4-acoustic.com)