



Pro Audio  
Germany

# HCS - SERIES

[www.4-acoustic.com](http://www.4-acoustic.com)



## HCS - SERIES

The HCS series describes a totally newly defined entry level of our Pro Audio speaker systems. The HCS speakers are perfect in fixed installations for restaurants, small clubs and conference rooms as well as for the mobile DJ and as small band sound applications.



GERMAN  
Pro  
Audio  
Engineering

[www.4-acoustic.com](http://www.4-acoustic.com)



# Contents

Contents.....	<b>03</b>
HCS-105C Coaxial Source Point Speaker.....	<b>04</b>
HCS-108C Coaxial Source Point Speaker.....	<b>05</b>
HCS-804 Column Speaker .....	<b>06</b>
HCS-112CM 12" Source Point Coaxial Monitor.....	<b>07</b>
HCS-115CM 15" Source Point Coaxial Monitor.....	<b>07</b>
HCS-118B Single 18" Ferrite Subwoofer.....	<b>08</b>
HCS-118NB Single 18" Neodymium Subwoofer.....	<b>09</b>
HCS-115F Single 15"+1,4" Fullrange Speaker .....	<b>10</b>
HCS-215F Double 15"+1,4" Fullrange Speaker .....	<b>11</b>

# HCS-105C

www.4-acoustic.com

- Coaxial source point design
- Neodymium coaxial chassis
- Extremely durable anti-scratch Polyurethane coating
- Suitable for fixed installation and near fill monitor
- 360 W program power
- 180 W AES power
- Several suspensions points for roof and wall mounting
- 8 Ohm Impedance

HCS-105C is designed for background sound installations, monitor applications and all kind of near fill supports. Equipped with state of art neodymium coaxial speaker, this source point series offer a wide range sphere of action. The housings are prepared with several suspensions points for hanging brackets and wall mounting kits. To complete this unbelievable flexible speaker series we offer different color housings and different kind of mounting plates to hang group of speakers in fixed installations.

## Speci- fication

### HCS-105C

Model Name	HCS-105C
GS1 (EAN) CODE	4260318510110
System Type	5" Coaxial Source Point Speaker
Power Rating	180 W AES 360 W program 720 W peak
Frequency Range (+/- 3 dB)	65 Hz - 20 kHz
Coverage Pattern (hvx)	70°
Sensitivity	93 dB 1w/1m
Maximum SPL	117 dB
Chassis	1 x STG-5C 150W AES + 30W AES, coaxial neodymium
Nominal Impedance	8 Ohm
Input Connectors	2 x Neutrik NL4 Socket parallel 1+/-1-
Housing	Birch Multiplex
Suspension/Mounting	12xM6 suspension
Coating	anti-scratch Polyurethane coating
Dimensions (h/w/d)	165x140x185 mm
Net weight	3,1 Kg



## Acces- series

### HCS-105C

Order Code	GS1 (EAN) Code	Description
WH-105C	4260318511308	Wall mounting kit for HCS-105C
SB-105C	4260318511322	Standing frame for HCS-105C
CB-105C	4260318511650	Hanging bracket for HCS-105C
KA-SP1-50	4260318511339	50 Meter Speaker cable 2x1,5qmm
KA-SP1-100	4260318511346	100 Meter Speaker cable 2x1,5qmm



Pro Audio  
Germany

# HCS-108C

www.4-acoustic.com

- Coaxial source point design
- Neodymium coaxial chassis
- Extremely durable anti-scratch Polyurethane coating
- Suitable for fixed installation
- 600 W program power
- 300 W AES power
- Several suspensions points for roof and wall mounting
- 8 Ohm Impedance

HCS-108C is a source point coaxial speaker for background sound installations, monitor applications and all kind of near fill supports. The coaxial source point design with state of art neodymium chassis offers a harmonic and powerful sound. The housing is equipped with several suspensions points for hanging brackets and wall mounting kits. To complete this flexible speaker series, we offer different color housings and different kind of mounting solutions.

Speci-  
fication

## HCS-108C

Model Name	HCS-108C
GS1 (EAN) CODE	4260318510127
System Type	8" Coaxial Source Point Speaker
Power Rating	300 W AES 600 W program 1200 W peak
Frequency Range (+/- 3 dB)	55 Hz - 20 kHz
Coverage Pattern (hvx)	100°
Sensitivity	98 dB 1w/1m
Maximum SPL	125 dB
Chassis	1 x STG-8C 250W AES + 50W AES, coaxial neodymium
Nominal Impedance	8 Ohm
Input Connectors	2 x Neutrik NL4 Socket parallel 1+/1-
Housing	Birch Multiplex
Suspension/Mounting	12xM6 suspension
Coating	anti-scratch Polyurethane coating
Dimensions (h/w/d)	244x220x265 mm
Net weight	6,2 Kg



Acces-  
series

## HCS-108C



Order Code	GS1 (EAN) Code	Description
WH-108C	4260318511315	Wall mounting kit for HCS-108C
SB-108C	4260318511667	Standing frame for HCS-108C
CB-108C	4260318511674	Hanging bracket for HCS-108C
KA-SP1-50	4260318511339	50 Meter Speaker cable 2x1,5qmm
KA-SP1-100	4260318511346	100 Meter Speaker cable 2x1,5qmm

GERMAN  
Pro  
Audio  
Engineering



# HCS-804

www.4-acoustic.com



- Multi function 4,5" column speaker
- Suitable for rental and installation
- 800 W program power
- 400 W AES power
- Low-distortion 4,5" neodymium fullrange driver
- 16 Ohm Impedance
- Innovative fly ware design for hanging or stacking installations

## Specification

### HCS-804

Model Name	HCS-804
GS1 (EAN) CODE	4260318510103
System Type	8 x 4,5" column speaker
Power Rating	400 W AES 800 W program 1600 W peak
Frequency Range (- 10 dB)	125 Hz - 20 kHz
Coverage Pattern (hvx)	100°x30°
Sensitivity	98 dB 1w/1m
Maximum SPL	128 dB
Driver	1 x STG-X04 50W AES
Suspension/Mounting	Fly ware for hanging or stacking 35 mm pole socket
Nominal Impedance	16 Ohm
Input Connectors	2 x Neutrik NL4 Socket parallel 2+/2-
Dimensions (h/w/d)	1070x140x215 mm
Net weight	12,0 kg

## Accessories

### HCS-804

Order Code	GS1 (EAN) Code	Type
HCS-804-RC	4260318511278	Rain and transport cover for two HCS-804
STG-STD	4260318511032	Tripot Speaker Stand
KA-SP2-05	4260318510967	5 Meter Speaker cable 2x2,5qmm
KA-SP2-10	4260318510974	10 Meter Speaker cable 2x2,5qmm
KA-SP2-15	4260318510981	15 Meter Speaker cable 2x2,5qmm
KA-SP2-20	4260318510998	20 Meter Speaker cable 2x2,5qmm
SA-2100	4260318510837	2 Channel Class H Amplifier 2 x 1000 W @ 8 ohm



## HCS-CM

www.4-acoustic.com

- Professional vocal stage monitor
- High performance source point coaxial speakers
- 900 W / 1100W AES program power
- 450 W / 550W AES power
- Designed for touring, rental and installation
- 8 Ohm Impedance
- Left and right side connecting panel with Neutrik NL4 socket

Speci-  
fication

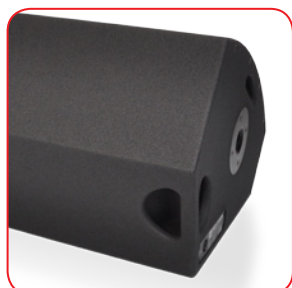
HCS-CM

Model Name	HCS-112CM	HCS-115CM
GS1 (EAN) CODE	4260318510134	4260318510141
System Type	12" source point coaxial monitor	15" source point coaxial monitor
Power Rating	500 W AES 1000 W program 2000 W peak	600 W AES 1200 W program 2400 W peak
Frequency Range (- 10 dB)	49 Hz - 20 kHz	45 Hz - 20 kHz
Coverage Pattern (hvx)	60°x40°	60°x40°
Sensitivity	100 dB 1w/1m	103 dB 1w/1m
Maximum SPL	130 dB	136 dB
Woofers	STG-12CM coaxial, neodymium	STG-15CM coaxial, neodymium
Suspension/Mounting	35 mm pole socket	35 mm pole socket
Nominal Impedance	8 Ohm	8 Ohm
Input Connectors	2 x Neutrik NL4 Socket parallel 1+/1-	2 x Neutrik NL4 Socket parallel 1+/1-
Dimensions (h/w/d)	310x500x370 mm	345x600x425 mm
Net weight	15,0 kg	28,0 kg

Acces-  
sories

HCS-CM

Order Code	GS1 (EAN) Code	Type
HCS-112CM-FC	4260318511292	Flight Case with wheels for 2 pcs. HCS-112CM
HCS-115CM-FC	4260318511308	Flight Case with wheels for 2 pcs. HCS-115CM
STG-STD	4260318511032	Tripot Speaker Stand
KA-SP2-05	4260318510967	5 Meter Speaker cable 2x2,5qmm
KA-SP2-10	4260318510974	10 Meter Speaker cable 2x2,5qmm
KA-SP2-15	4260318510981	15 Meter Speaker cable 2x2,5qmm
KA-SP2-20	4260318510998	20 Meter Speaker cable 2x2,5qmm
SA-2100	4260318510837	2 Channel Class H Amplifier 2 x 1000 W @ 8 ohm



# HCS-118B

www.4-acoustic.com

- High SPL Output level
- 4" voice coil ferrite woofer design
- Low distortion
- Ready for a life time on the road
- Suitable for touring, rental and installation
- 1400 W program power
- 1000 W AES power
- Top mounted M20 threaded top hat
- 8 Ohm Impedance

## Specification

### HCS-118B



Model Name	HCS-118B
GS1 (EAN) CODE	4260318510813
System Type	Single 18" Subwoofer, Ferrite
Power Rating	1000 W AES 1400 W program 2800 W peak
Frequency Range (- 10 dB)	37 Hz - 250 Hz
Sensitivity	98 dB 1w/1m
Maximum SPL	128 dB
Woofer	1 x STG-18FR 1000W AES, 4" voice coil
Suspension/Mounting	Top mounted M20 threaded top hat
Nominal Impedance	8 Ohm
Input Connectors	2 x Neutrik NL4 Socket parallel 1+/1-
Dimensions (h/w/d)	695x570x600 mm
Net weight	44,5 kg

## Accessories

### HCS-118B

Order Code	GS1 (EAN) Code	Description
STG-WH100	4260318511131	4 x 100mm STAGETONE blue wheels (two pcs. with brake)
STG-M20T	4260318511049	Adjustable M20 threaded distance Tube 1,0 Meter to 1,5 Meter
HCS-118B-RC	4260318511025	Rain and transport cover for HCS-118B
KA-SP4-0.5	4260318511155	0,5 Meter speaker cable 4x2,5qmm
KA-SP4-05	4260318511193	5 Meter speaker cable 4x2,5qmm
KA-SP4-10	4260318511209	10 Meter speaker cable 4x2,5qmm
KA-SP4-15	4260318511216	15 Meter speaker cable 4x2,5qmm
KA-SP4-20	4260318511223	20 Meter speaker cable 4x2,5qmm
ST-4200	4260318511469	2-Channel Class D Amplifier 2x2000W @ 8Ohm







Pro Audio  
Germany

# HCS-118NB

www.4-acoustic.com

- High SPL Output level
- 4" voice coil neodymium woofer design
- Ready for a life time on the road
- Suitable for touring, rental and installation
- 3000 W program power
- 1500 W AES power
- Top mounted M20 threaded top hat
- 8 Ohm Impedance

## Speci- fication

### HCS-118NB



Model Name	HCS-118NB
GS1 (EAN) CODE	4260318511124
System Type	Single 18" Subwoofer, Neodymium
Power Rating	1500 W AES 3000 W program 6000 W peak
Frequency Range (- 10 dB)	30 Hz - 250 Hz
Sensitivity	98 dB 1w/1m
Maximum SPL	132 dB
Woofer	1 x STG-18N 1500W AES, 4" voice coil
Suspension/Mounting	Top mounted M20 threaded top hat
Nominal Impedance	8 Ohm
Input Connectors	2 x Neutrik NL4 Socket parallel 1+/1-
Dimensions (h/w/d)	695x570x600 mm
Net weight	41,5 kg

## Acces- sories

### HCS-118B

Order Code	GS1 (EAN) Code	Description
STG-WH100	4260318511131	100mm blue wheel Set (two pcs. with brake)
STG-M20T	4260318511049	Adjustable M20 threaded distance Tube 1,0 Meter to 1,5 Meter
HCS-118NB-RC	4260318511025	Rain and transport cover for HCS-118NB
KA-SP4-0.5	4260318511155	0,5 Meter speaker cable 4x2,5qmm
KA-SP4-05	4260318511193	5 Meter speaker cable 4x2,5qmm
KA-SP4-10	4260318511209	10 Meter speaker cable 4x2,5qmm
KA-SP4-15	4260318511216	15 Meter speaker cable 4x2,5qmm
KA-SP4-20	4260318511223	20 Meter speaker cable 4x2,5qmm
ST-4200	4260318511469	2-Channel Class D Amplifier 2x2000W @ 8Ohm



GERMAN  
Pro  
Audio  
Engineering

# HCS-115F

www.4-acoustic.com

- Crafted with the highest quality components
- Suitable for touring, rental and installation
- 1800 W program power
- 900 W AES power
- High-output low-distortion 3" voice coil, die cast frame woofers
- 200 Watt 1,4" Exit compression driver with 3" voice coil
- 8 Ohm Impedance
- Proprietary 90° x 45° linear directivity horn design



## Speci- fication

### HCS-115F

Model Name	HCS-115F
GS1 (EAN) CODE	4260318510905
System Type	2-Way 15"+1,4" (3" voice coil) Fullrange Speaker
Power Rating	900 W AES 1800 W program 3600 W peak
Frequency Range (+/- 3 dB)	45 Hz - 20 kHz
Coverage Pattern (hvx)	90°x45°
Sensitivity	100 dB 1w/1m
Maximum SPL	128 dB
Woofer	1 x STG-15FR 800W AES, 3" voice coil
Driver	1 x STG-75F 200W AES, 3" voice coil
Nominal Impedance	8 Ohm
Input Connectors	2 x Neutrik NL4 Socket parallel 1+/1-
Dimensions (h/w/d)	760x494x457 mm
Net weight	40,0 kg

## Acces- series

### HCS-115F

Order Code	GS1 (EAN) Code	Type
HCS-115F-RC	4260318511001	Rain and transport cover for HCS-115F
KA-SP2-05	4260318510967	5 Meter Speaker cable 2x2,5qmm
KA-SP2-10	4260318510974	10 Meter Speaker cable 2x2,5qmm
KA-SP2-15	4260318510981	15 Meter Speaker cable 2x2,5qmm
KA-SP2-20	4260318510998	20 Meter Speaker cable 2x2,5qmm
ST-4200	4260318511469	2-Channel Class D Amplifier 2x2000W @ 8Ohm



## HCS-215F

www.4-acoustic.com



- Ready for a life time on the road
- Suitable for touring, rental and installation
- 3600 W program power
- 1800 W AES power
- Steel Recessed Castor with 64mm Diameter Black Wheel
- Strong Corner Bar Handle for easy transport
- High-output low-distortion 3" voice coil, die cast frame woofers
- 200 Watt 1,4" Exit compression driver with 3" voice coil
- 4 Ohm Impedance
- Proprietary 90° x 45° linear directivity horn design

Speci-  
fication

## HCS-215F

Model Name	HCS-215F
GS1 (EAN) CODE	4260318510912
System Type ation	3-Way 2x15"+1,4" Fullrange Speaker
Power Rating	1800 W AES 3600 W program 7200 W peak
Frequency Range (+/- 3 dB)	43 Hz - 20 kHz
Coverage Pattern (hvx)	90°x45°
Sensitivity	103 dB 1w/1m
Maximum SPL	139 dB
Woofer	2 x STG-15FR 800W AES, 3" voice coil
Driver	1 x STG-75F 200W AES, 3" voice coil
Nominal Impedance	4 Ohm
Input Connectors	2 x Neutrik NL4 Socket parallel 1+/1-
Dimensions (h/w/d)	1160x494x457 mm
Netweight	57,0 kg

Acces-  
sories

## HCS-215F

Order Code	GS1 (EAN) Code	Type
HCS-215F-RC	4260318511001	Rain and transport cover for HCS-215F
KA-SP2-05	4260318510967	5 Meter Speaker cable 2x2,5qmm
KA-SP2-10	4260318510974	10 Meter Speaker cable 2x2,5qmm
KA-SP2-15	4260318510981	15 Meter Speaker cable 2x2,5qmm
KA-SP2-20	4260318510998	20 Meter Speaker cable 2x2,5qmm
ST-4200	4260318511469	2-Channel Class D Amplifier 2x2000W @ 80hm





**Pro Audio**  
Germany

# HCS - SERIES

[www.4-acoustic.com](http://www.4-acoustic.com)

# HCS - SERIES



**Pro Audio**  
Germany

**INLINE Marketing GmbH**

Bunsenstrasse 32

59229 Ahlen, Germany

Tel. +49 2382 7087-0

Fax +49 2382 7087-25

E-Mail [sales@4-acoustic.com](mailto:sales@4-acoustic.com)

Web [www.4-acoustic.com](http://www.4-acoustic.com)